

Cheshire West and Chester Council Population Forecasts June 2017



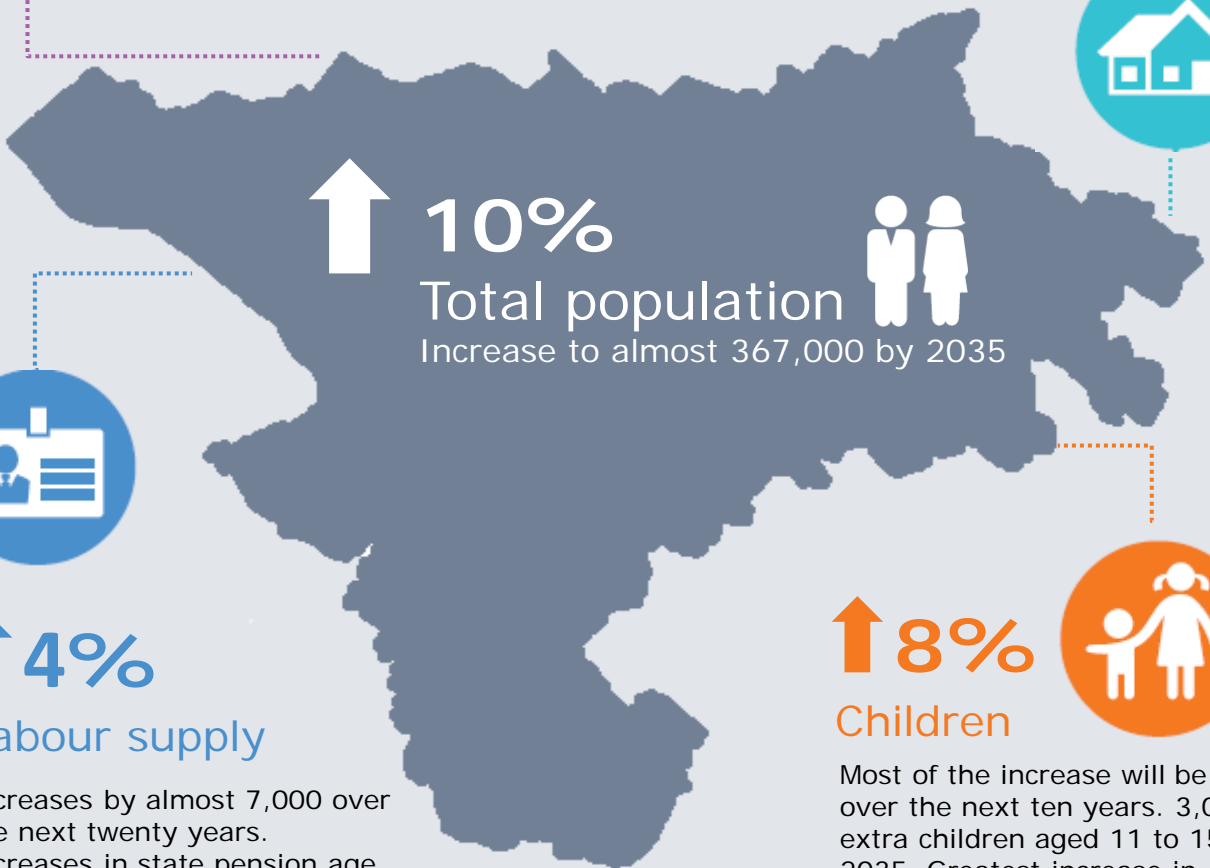
In 2015, Cheshire West and Chester was home to around 334,000 people. Over the next 20 years ...



↑ 46%
Older people

Population aged 65 plus will increase from 70,000 in 2015 to 101,000 in 2035. Numbers aged 85 or older will increase from 9,000 to 20,000.

22,000
new homes planned



↑ 4%
Labour supply

Increases by almost 7,000 over the next twenty years. Increases in state pension age will result in more workers aged 65 or above.

↑ 8%
Children

Most of the increase will be over the next ten years. 3,000 extra children aged 11 to 15 by 2035. Greatest increase in children in Ellesmere Port locality.

