

# Hargrave and Huxley Parish Council



Visit the Joint Strategic Needs Assessment (JSNA) for data and intelligence.

[www.cheshirewestandchester.gov.uk/JSNA](http://www.cheshirewestandchester.gov.uk/JSNA)

## 2015 mid year estimates of population

Age	Male	Female	Total
0-4	0	10	10
5-9	10	10	20
10-14	20	10	30
15-19	10	10	20
20-24	10	10	20
25-29	10	10	20
30-34	0	10	10
35-39	10	10	20
40-44	10	20	20
45-49	20	10	30
50-54	10	30	40
55-59	20	10	30
60-64	10	10	30
65-69	20	20	40
70-74	20	10	30
75-79	10	10	20
80-84	10	10	10
85-89	0	0	0
90+	0	0	10
All ages	190	210	400

## Key statistics

### 2015 population estimates:

0-15	60
16-64	230
65+	110
Total	400

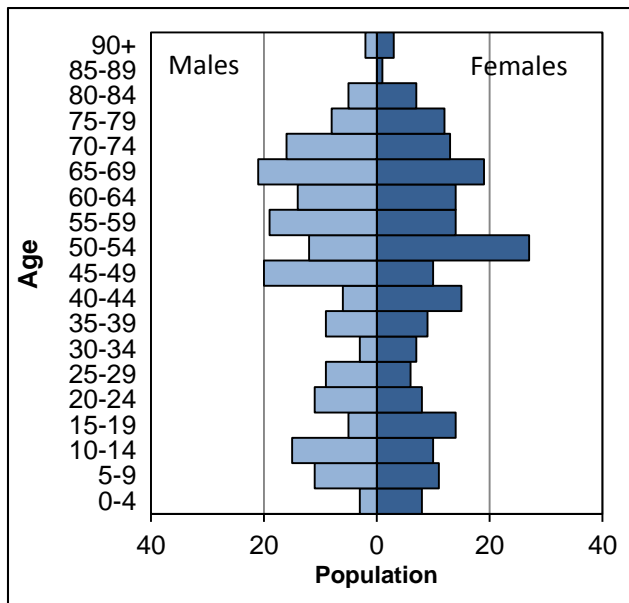
### 2011 Census:

Population	412
Households	161
Dwellings	168

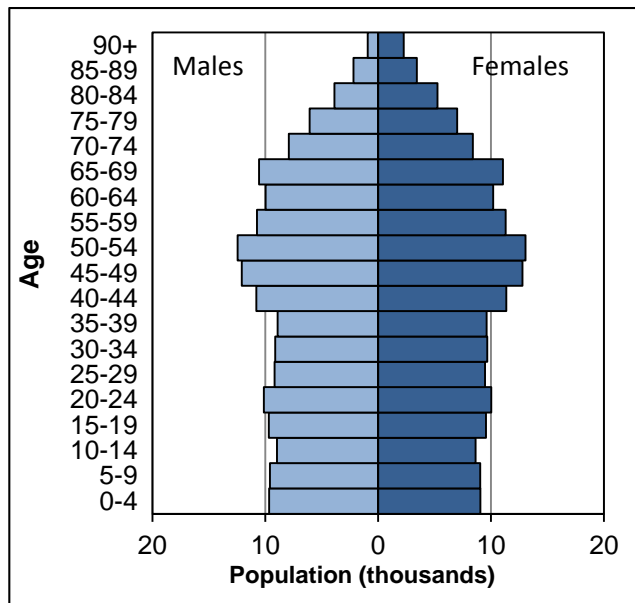
### 2001 Census:

Population	376
Households	162
Dwellings	163

## Hargrave and Huxley Parish Council



## Cheshire West and Chester



Notes: Population estimates have been independently rounded to the nearest 10.

Sources: 2015 mid year estimates of population and 2011 Census tables. Parish Council statistics are aggregated from Output Area estimates. Office for National Statistics licensed under the Open Government Licence v.3.0.