

# Aldford and Saighton Parish Council



Visit the Joint Strategic Needs Assessment (JSNA) for data and intelligence.

[www.cheshirewestandchester.gov.uk/JSNA](http://www.cheshirewestandchester.gov.uk/JSNA)

## 2015 mid year estimates of population

Age	Male	Female	Total
0-4	10	10	20
5-9	10	10	20
10-14	20	10	30
15-19	10	30	40
20-24	10	10	20
25-29	10	10	20
30-34	20	10	20
35-39	10	10	20
40-44	20	10	30
45-49	20	40	50
50-54	20	20	40
55-59	10	10	20
60-64	10	10	30
65-69	20	20	40
70-74	10	10	20
75-79	10	10	20
80-84	10	10	20
85-89	10	10	10
90+	0	0	0
All ages	220	250	470

## Key statistics

### 2015 population estimates:

0-15	80
16-64	280
65+	110
Total	470

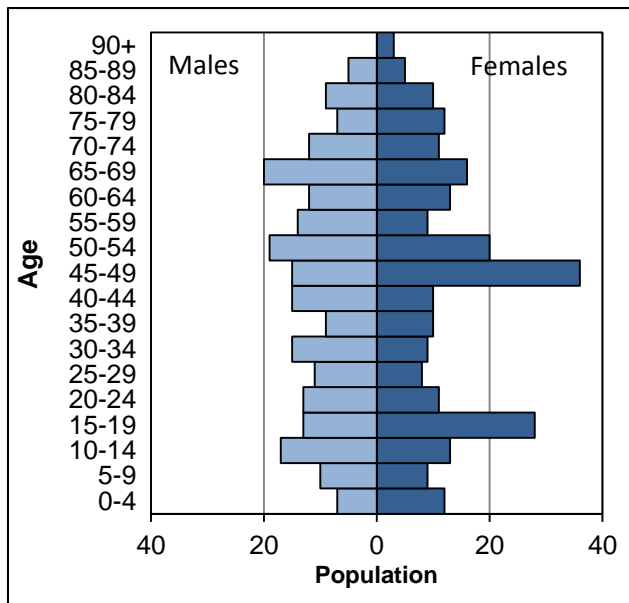
### 2011 Census:

Population	474
Households	183
Dwellings	195

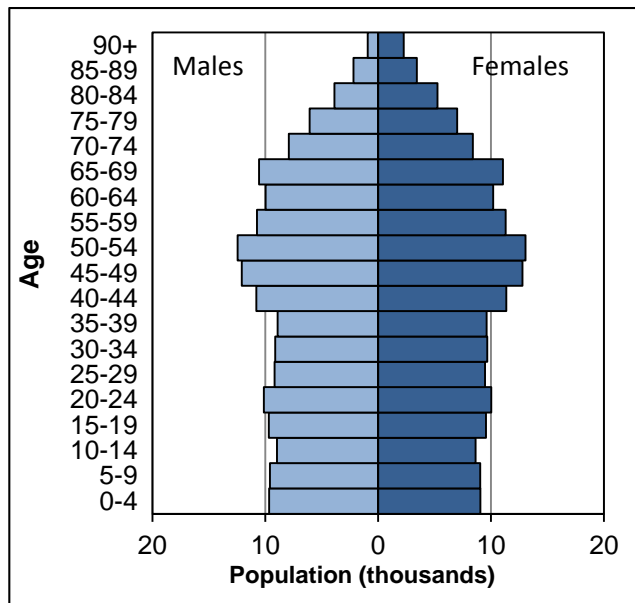
### 2001 Census:

Population	443
Households	174
Dwellings	184

## Aldford and Saighton Parish Council



## Cheshire West and Chester



Notes: Population estimates have been independently rounded to the nearest 10.

Sources: 2015 mid year estimates of population and 2011 Census tables. Parish Council statistics are aggregated from Output Area estimates. Office for National Statistics licensed under the Open Government Licence v.3.0.