

Children aged under five in Cheshire West and Chester...

Population aged under five

In 2015 an estimated **18,723** children aged under five were resident in Cheshire West and Chester

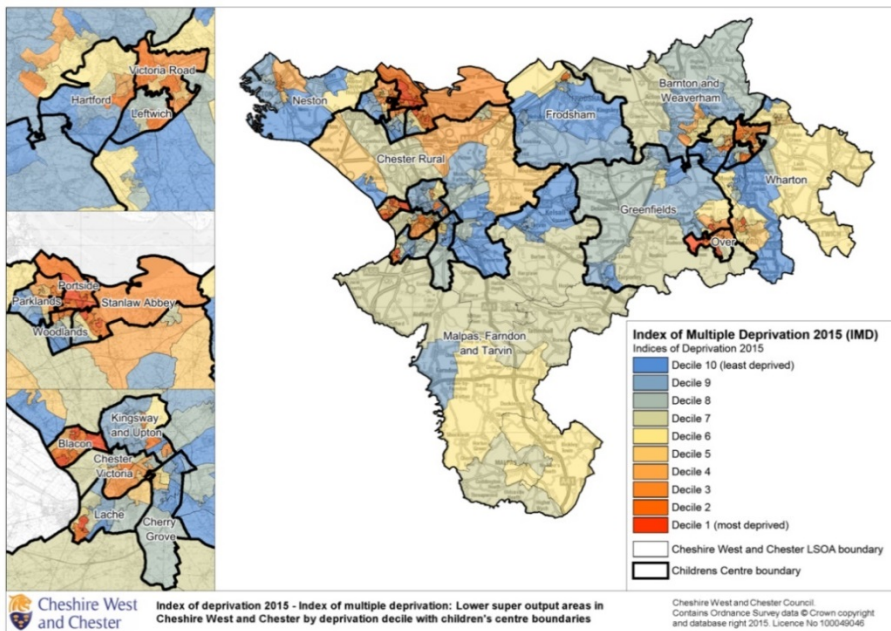
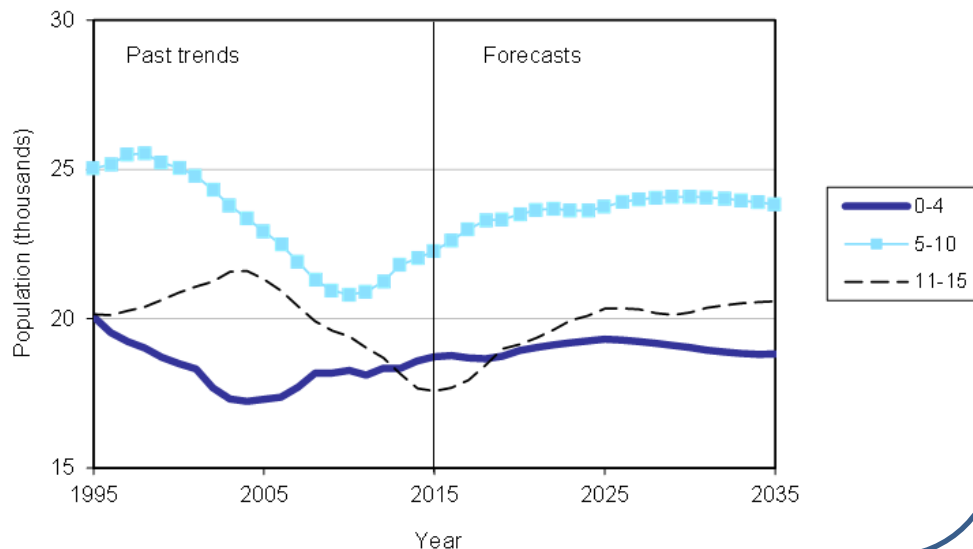
This equates to 5.6% of the total population

Lower than England (6.3%)

Highest proportions in Portside (8.4%), Blacon (7.3%) and Over (7.3%)

Forecast to increase to 19,300 by 2025

The number of children aged 0-4 will remain fairly constant over the next twenty years, at around **19,000**.



Deprivation (IMD 2015)

23.4% of under fives (4,389 children) live in Quintile 1 (20% most deprived areas of England)
Lower than England (25.9%)

Highest proportions of under fives living in Q1 are in Portside (100%), Blacon (77%) and Over (53%)

Cheshire West and Chester Joint Strategic Needs Assessment



www.cheshirewestandchester.gov.uk/jsna

Children aged under five in Cheshire West and Chester...

Public Health England: Early years key indicators

Compared with benchmark ● Better ● Similar ● Worse ○ Not Compared

* a note is attached to the value, hover over to see more details

Recent trends: (in development) - Could not be calculated ↑ Increasing / Getting worse ↑ Increasing / Getting better ↓ Decreasing / Getting worse ↓ Decreasing / Getting better → No significant change ↑ Increasing ↓ Decreasing

 Export table as image



Indicator	Period	Ch W & Ches			Region England		England			
		Recent Trend	Count	Value	Value	Value	Worst	Range	Best	
Under 18 conceptions	2015	↓	98	17.9	24.7	20.8	43.8		5.7	
Smoking status at time of delivery	2015/16	↓	354	9.9%	13.7%*	10.6%*	26.0%		1.8%	
Low birth weight of term babies	2015	→	78	2.4%	2.8%	2.8%	4.8%		1.3%	
Infant mortality	2013 - 15	-	36	3.4	4.2	3.9	7.9		2.0	
Breastfeeding prevalence at 6-8 weeks after birth - current method	2015/16	-	1,186	*	*	43.2%*	18.0%		76.5%	
Breastfeeding prevalence at 6-8 weeks after birth - previous method	2014/15	-	1,206	35.4%	*	43.8%	19.1%		81.5%	
Reception: Prevalence of overweight (including obese)	2015/16	↓	744	20.5%	23.2%	22.1%	30.1%		14.3%	
A&E attendances (0-4 years)	2015/16	↑	8,436	450.6	699.1	587.9	1,836.1		335.0	
Hospital admissions for accidental and deliberate injuries in children (aged 0-4)	2015/16	↓	325	173.6	182.0	129.6	254.2		56.0	
Emergency admissions (aged 0-4)	2014/15	↑	3,969	213.6	204.6*	147.0	265.8		62.3	
Population vaccination coverage - MMR for two doses (5 years old)	2015/16	↑	3,656	91.3%	89.4%	88.2%	56.5%		98.6%	
Children achieving a good level of development at the end of reception	2015/16	-	2,826	70.9%	66.7%	69.3%	59.7%		78.7%	

<90 90 to 95 ≥95

Cheshire West and Chester Joint Strategic Needs Assessment



www.cheshirewestandchester.gov.uk/jsna

Source: Public Health England, April 2017

Produced by Cheshire West and Chester Insight and Intelligence, May 2017

Children under five in Cheshire West and Chester...

Population aged under five

18,723 children 2015
5.6% of total population
Lower than England (6.3%)
Highest proportions in Portside (8.4%), Blacon (7.3%) and Over (7.3%)

Forecast to increase to 19,300 by 2025

Deprivation (IMD 2015)

23.4% of under fives (4,389 children) live in quintile 1 (20% most deprived areas of England)
Lower than England (25.9%)

Highest proportions of under fives living in quintile 1 are in Portside (100.0%), Blacon (76.7%) and Over (53.3%)

Infant mortality

3.4 per 1,000 in 2013-15

- Similar to England (3.9)
- ➔ Similar to 2012-14 (3.3)

Unless otherwise stated, small geographies relate to children's centre footprints in Cheshire West and Chester.

Smoking at time of delivery

9.9% in 2015/16

- Similar to England (10.6%)
 - ↓ Better than 2014/15 (11.4%)
- Highest proportions in Ellesmere Port Town ward (31.7%), Blacon ward (30.2%), Grange ward (28.3%)

Breast feeding at 6 to 8 weeks

34% in 2015/16

- Worse than England (43.2%)
 - ↓ Worse than 2014/15 (35.4%)
- Range from 13.7% in Blacon to 50.76% in Chester Victoria
Lowest proportions in Blacon (13.7%), Over (19.7%) and Portside (20.9%)

Excess weight (reception)

20.5% in 2015/16

- Better than England (22.1%)
 - ↓ Better than 2014/15 (23.1%)
- Range from 12.1% in Hartford to 28.9% in Stanlaw Abbey

Highest proportions in Stanlaw Abbey (28.9%), Over (27.5%) and Victoria Road (26.7%)
By year six one in three children (33.6%) experience excess weight.
(Similar to England, getting worse)

A and E attendances

for children aged under five
450.6 per 1,000 in 2015/16
(provisional)

- Better than England (587.9)
- ↑ Worse than 2014/15 (373.8)

Emergency hospital admissions

for children aged under five
219.9 per 1,000 in 2015/16
(provisional)

- Worse than England (155.0)
- ↑ Worse than 2014/15 (213.6)

Hospital admissions

Unintentional and deliberate injury
173.6 per 100,000 in 2015/16

- Worse than England (129.6)
 - ↑ Worse than 2014/15 (165.7)
- Range from 108.9 per 100,000 in Wharton to 315.5 per 100,000 in Portside
Highest rates in Portside (315.5 per 100,000), Blacon (251.1 per 100,000) and Malpas, Farndon and Tarvin (230.7 per 100,000)

Cheshire West and Chester Joint Strategic Needs Assessment



www.cheshirewestandchester.gov.uk/jsna

Children under five in Cheshire West and Chester...

Good level of development

All children

70.9% in 2015/16

● Better than England (69.3%)

↑ Better than 2014/15 (68.8%)

Range from 62.1% in Blacon
to 79.0% in Cherry Grove

Lowest proportions in Blacon (62.1%), Over
(63.8%) and Chester Victoria (63.9%)

Good level of development

Free School Meal eligible children

49.5% in 2015/16

● Worse than England (54.4%)

→ Similar to 2014/15 (49.6%)

Range from 30.4% in Parklands
to 83.3% in Cherry Grove

Lowest proportions in Parklands (30.4%), Malpas,
Farndon and Tarvin (35.0%) and Greenfields
(35.7%)

Phonics screening: expected level

63.5% in 2015/16

● Worse than England (68.6%)

↑ Better than 2014/15 (61.8%)

Unless otherwise stated, small geographies relate to
children's centre footprints in Cheshire West and
Chester.

Early years foundation stage Providers (Spring 2017):

Maintained Schools

95.0% rated Good or Outstanding
(19 out of 20 schools)

5.0% rated Requires Improvement
(1 out of 20 schools)

PVIs and Pre-Schools

95.7% rated Good or Outstanding
(135 out of 141 settings)

3.6% rated Requires Improvement
(5 out of 141 settings)

0.7% rated Inadequate
(1 out of 141 settings)

PVI = Private, voluntary and independent

Childminders

94.0% rated Good or Outstanding
(140 out of 149 settings)

5.4% rated Requires Improvement
(8 out of 149 settings)

0.7% rated Inadequate
(1 out of 149 settings)

* Percentages may not sum to 100.0% due to
rounding

Special Educational Needs and Disabilities (SEND)

6.1% of children in Cheshire
West and Chester who attend
an Early Years setting are
identified as having SEND. (July
2016)

This equated to 436 children,
317 of which were supported by
Early Years Specialist Services
and 119 of which were
supported by Early years
consultants.

Children with EHC plans and Statements in 2016

4.9% were aged under five
Higher than the national average
(4.1%)

EHC plan = Education, Health and Care plan

Mental health

7.7% of children aged under five
(about 1,440 children) are
estimated to have a mental
health disorder

Cheshire West and Chester Joint Strategic Needs Assessment



www.cheshirewestandchester.gov.uk/jsna