



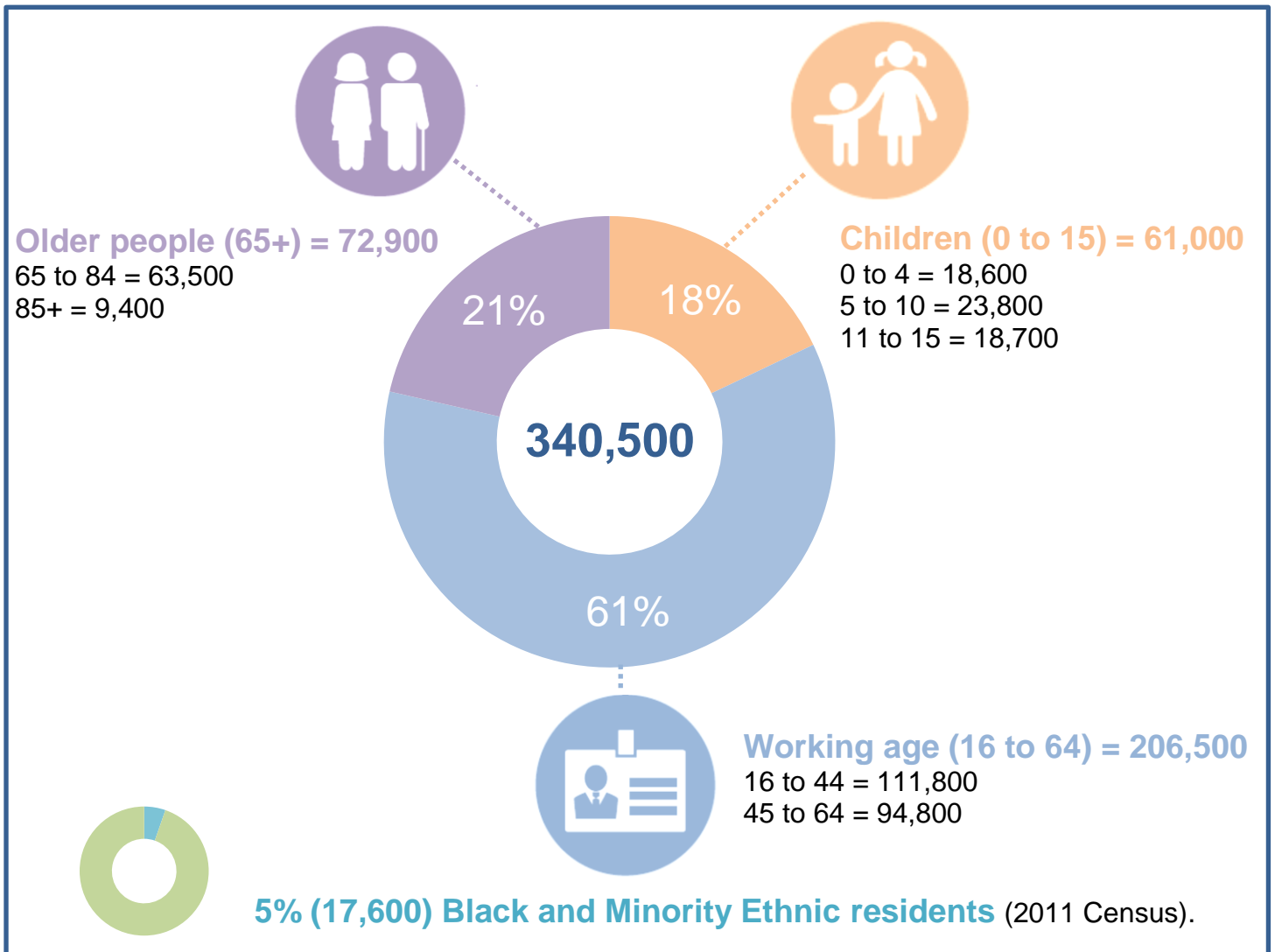
Visit the Joint Strategic Needs Assessment (JSNA) for data and intelligence. www.cheshirewestandchester.gov.uk/JSNA

Cheshire West and Chester Council

Population estimates 2018



In 2018, Cheshire West and Chester had an estimated resident population of 340,500 people.



Population estimates (including ward estimates) are available on the Joint Strategic Needs Assessment website.

Further intelligence on population, health and wellbeing and other statistics including views of local people are available from the Joint Strategic Needs Assessment webpages.

2019 estimates due summer 2020.

(Source: Office for National Statistics licensed under the Open Government Licence v.3.0.)

