

# Churton Parish Council



Visit the Joint Strategic Needs Assessment (JSNA) for data and intelligence.

[www.cheshirewestandchester.gov.uk/JSNA](http://www.cheshirewestandchester.gov.uk/JSNA)

## 2015 mid year estimates of population

Age	Male	Female	Total
0-4	10	10	10
5-9	10	10	20
10-14	20	10	30
15-19	10	10	20
20-24	10	10	10
25-29	0	10	10
30-34	10	10	10
35-39	10	10	10
40-44	20	20	30
45-49	10	20	30
50-54	20	10	30
55-59	10	10	20
60-64	10	10	20
65-69	10	20	30
70-74	10	10	20
75-79	0	10	10
80-84	0	10	10
85-89	0	0	10
90+	0	0	0
All ages	160	180	340

## Key statistics

### 2015 population estimates:

0-15	70
16-64	200
65+	80
Total	340

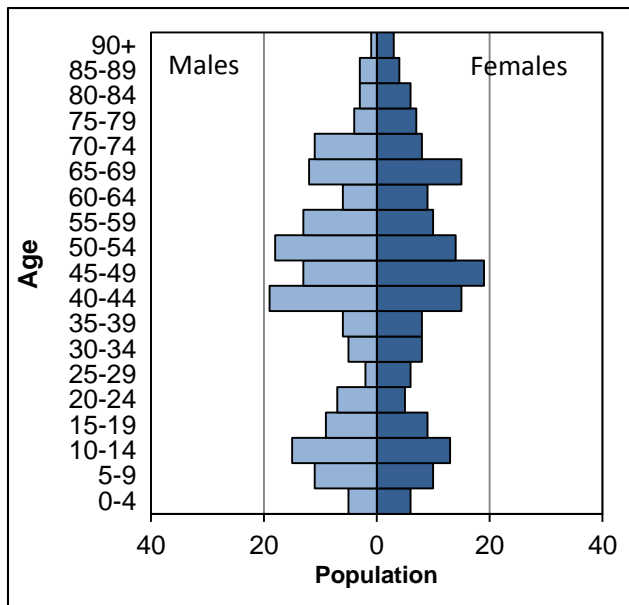
### 2011 Census:

Population	365
Households	152
Dwellings	157

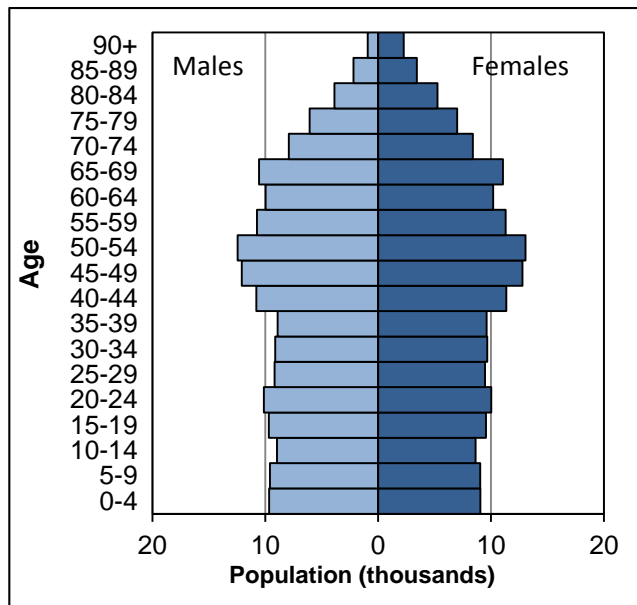
### 2001 Census:

Population	335
Households	137
Dwellings	147

Churton Parish Council



Cheshire West and Chester



Notes: Population estimates have been independently rounded to the nearest 10.

Sources: 2015 mid year estimates of population and 2011 Census tables. Parish Council statistics are aggregated from Output Area estimates. Office for National Statistics licensed under the Open Government Licence v.3.0.