

# Acton Bridge Parish Council



Visit the Joint Strategic Needs Assessment (JSNA) for data and intelligence.

[www.cheshirewestandchester.gov.uk/JSNA](http://www.cheshirewestandchester.gov.uk/JSNA)

## 2015 mid year estimates of population

Age	Male	Female	Total
0-4	10	10	20
5-9	20	10	30
10-14	10	20	30
15-19	20	10	30
20-24	10	10	20
25-29	10	10	20
30-34	0	10	10
35-39	10	10	20
40-44	30	20	50
45-49	20	20	40
50-54	30	20	60
55-59	20	20	40
60-64	30	20	60
65-69	30	40	70
70-74	30	30	60
75-79	20	10	30
80-84	10	10	20
85-89	10	10	10
90+	0	0	0
All ages	310	300	600

## Key statistics

### 2015 population estimates:

0-15	90
16-64	320
65+	190
Total	600

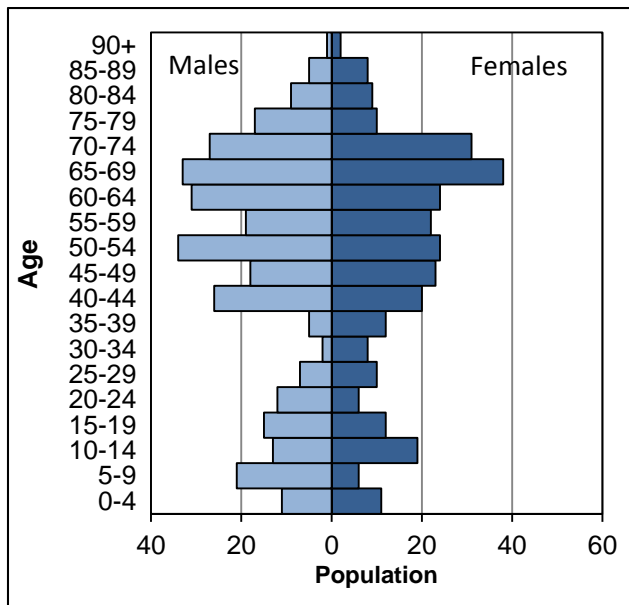
### 2011 Census:

Population	631
Households	271
Dwellings	285

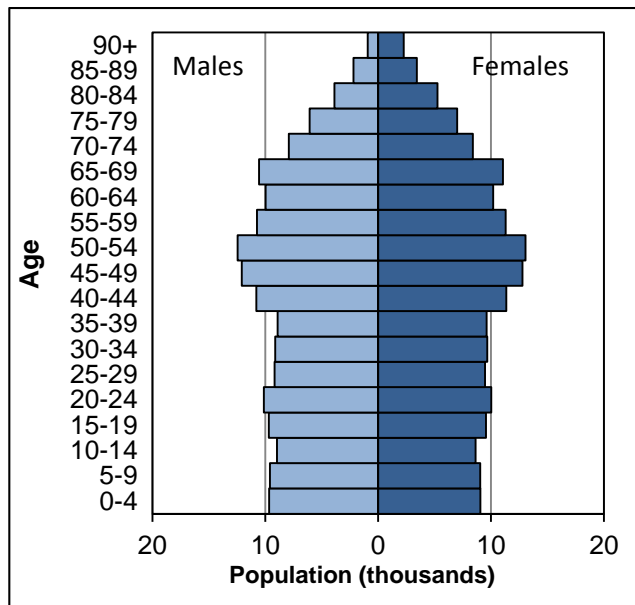
### 2001 Census:

Population	602
Households	262
Dwellings	269

## Acton Bridge Parish Council



## Cheshire West and Chester



Notes: Population estimates have been independently rounded to the nearest 10.

Sources: 2015 mid year estimates of population and 2011 Census tables. Parish Council statistics are aggregated from Output Area estimates. Office for National Statistics licensed under the Open Government Licence v.3.0.